

PercoTop®

a multileg product package, offering a variety of paint systems from one mixing station.



What is PercoTop®?

PercoTop® stands out as a highly user-friendly and efficient coating system, marked by its exceptional innovation. Thanks to its advanced tint and binder system, it can swiftly and effectively generate over 15,000 different colors. The meticulously coordinated components reduce errors, and the modular design minimizes the capital invested in inventory. Furthermore, larger paint quantities are readily available in custom-made color batches to meet individual customer needs.

In addition to its wide variety of topcoat qualities, PercoTop® offers a complementary range of priming materials that ensure outstanding adhesion, superior corrosion protection, and an impeccable surface finish on a diverse array of substrates. Regardless of your specific requirements for protection, durability, and application, PercoTop® proves to be the ideal paint system for your needs.



Highlights

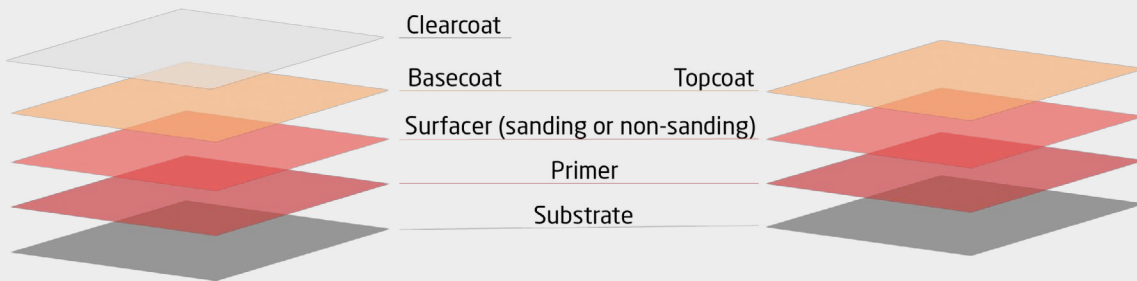
- A versatile and comprehensive industrial multileg system
- Developed to cover a broad array of industrial applications.
- A solution for multitude of substrates
- Solvent based metric mixing machine
- From Deep Matt (5GU 60°) to High Gloss (95GU 60°)
- A metric mix machine consists of a set of concentrated tints manufactured at a standardized and fixed colour position to ensure colour accuracy in a certain tolerance box.
- The combination of these tints with a set of quality binders according to well-defined formulating rules, gives the final colour. (2K topcoat MS, HS, basecoat, solvent,...)

Where to use PercoTop®

From agriculture, construction and earth moving equipment, automotive components, to general industrial coatings, we work to advance quality, productivity and efficiency. Industrial applicators benefit from our extensive range of primers, topcoats and clearcoats. PercoTop®, our premium product line of spray coatings, provides outstanding corrosion protection and optimum surface finish on a wide range of substrates. Whatever the requirements for protection, durability, and application, PercoTop® is the right paint system for you.



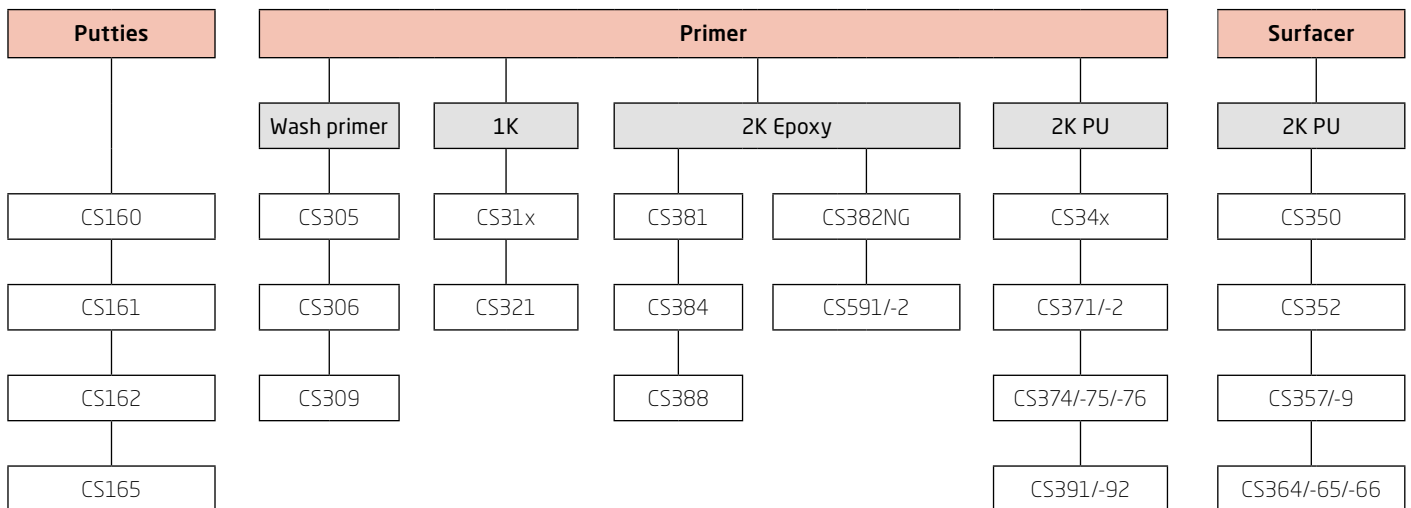
PercoTop® paint layering



PercoTop® is compatible with all application techniques:

- Gravity feed and HVLP
- Air-mix & airless
- Pressure pot
- Electrostatic
- Rolling and brushing

PercoTop® Undercoats



PercoTop® cleaners are designed for optimum surface preparation prior to application of a paint system. The goal is to achieve a flawlessly clean surface, resulting in impeccable outcomes. Each cleaner is meticulously crafted with distinct properties tailored for its specific purpose.

PercoTop® Multicleaner CS400 / CS420

Multicleaners are fast-evaporating mixtures. Both products are used primarily to remove oil and grease residue. CS420 is more dedicated to industrial pollution cleaning

PercoTop® Special Cleaner CS410

Is an adhesion promotor on plastic (PVC) and powder coating.

PercoTop® Silicone Remover CS440

Slowly evaporating organic solvent mixture used after sanding to remove dust or fingerprints or to clean plastic parts and have an anti-static effect.



From the **putties** for smoothing out large surfaces with medium to coarse surface defects, to putties that can be used at high temperatures, we have the full range in our 2K polyester putties offer.

PercoTop® Standard Putty CS160

Is a high-quality putty with very homogenous filling properties and excellent sandability, also after IR drying.

PercoTop® Spray Putty CS161

Is a sprayable quality putty. It provides a smooth appearance over large areas. It is easy to apply, has excellent sagging resistance and is easily sandable.

PercoTop® High Temperature Putty CS162

Is a high temperature putty. It has high flexibility, low porosity and can be over-coated with high bake or powder coatings (max. drying time and temperature: 30 minutes at 180°C). It is easily sandable and has a long pot life.

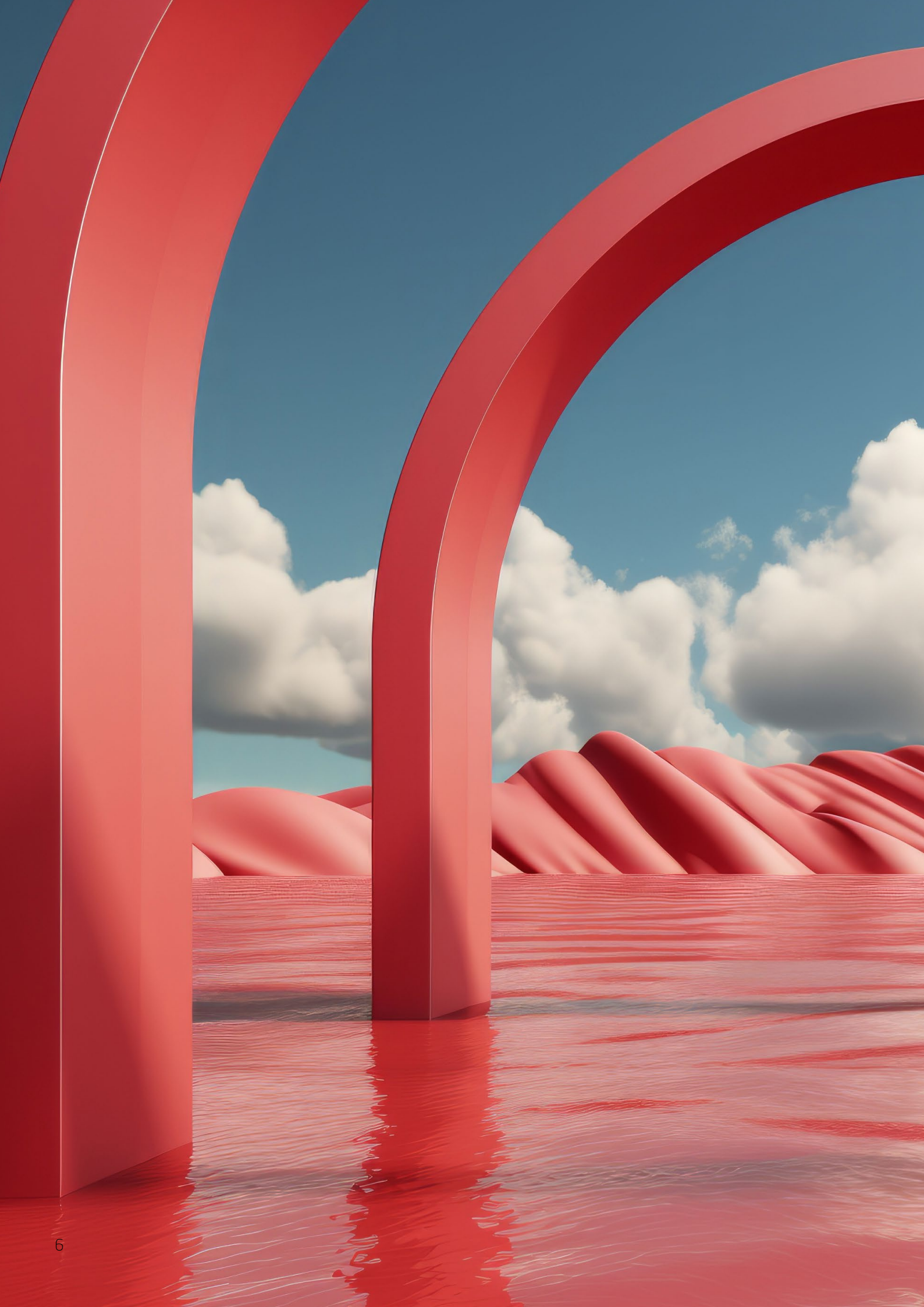
PercoTop® Thixoflex Putty CS165

Is a versatile putty. It has an excellent final appearance, low porosity and a high sagging resistance. It is easily sandable, very elastic to mechanical constraints.

Substrate guide

	CS160	CS161	CS162	CS165
Bare steel	X		X	X
Aluminium	X		X	X
Galvanised steel	X			
Cured 2K primers and fillers	X	X	X	X
Sanded UP-GP	X	X	X	X





On a clean surface, **1K primers** will provide easy application and fast drying at the right filmthickness . Next to these properties **2K wash primers**, in combination with 2K PU surfacers will also provide excellent corrosion protection of your metal or aluminium substrate. We have designed these primers not only to be REACH compliant and meet current and future environmental legislation, but also to give users high process control .

PercoTop® Chrome-Free 2K Wash Primer

Is an acid-curing etch primer on a polyvinyl butyral resin basis. It provides excellent adhesion, coverage, and corrosion protection on metallic substrates, especially on aluminum and stainless steel or dirty surface.

CS305: Olive Grey

CS306: Light Green

CS309: Translucent yellow

2K epoxy primer-surfacers, allow you to choose for a 2-layer (epoxy primer-topcoat) system versus a 3-layer system of wash primer-PU surfacer-topcoat, offering you outstanding corrosion protection and substrate leveling. 2K epoxy primers are commonly used as non-sanding primer surfacers, allowing you to speed up process times.

PercoTop® 2K HS Epoxy Primer

Is a chemically resistant, zinc chromate-free primer/filler providing excellent adhesion and corrosion protection on a variety of metallic substrates.

CS381: Light Grey

CS381B: Black

CS381W: White

PercoTop® 2K HS High Performance Epoxy Primer

Is a chemically resistant, zinc chromate-free primer/filler providing excellent adhesion, humidity resistance and corrosion protection on several substrates. It shows no yellowing and uses a bio-based activator.

CS384I: Ivory

CS384: Grey

CS384B: Black

PercoTop® 1K Primer 010

Is a zinc chromate-free primer based on polyvinyl butyral resins. It provides very good adhesion on metal substrates and is ideally suited for temporary and moderate corrosion protection levels.

CS310: Light Grey

CS311: Green

CS312: White

CS313: Black

CS315: Base

CS316: Beige

PercoTop® 1K Primer 021

Is a 1K filling primer based on alkyd resins. It dries fast and provides excellent appearance thanks to its good filling properties.

CS321: Light Grey.

PercoTop® 2K HS Supra Sand Epoxy Primer

Is specifically designed to be used when excellent corrosion is needed in combination with high build and sanding (e.g. to cover rough substrates)

CS388: Light Grey

PercoTop® 2K Zinc Rich Primer

This high-zinc primer can serve as the initial layer in a paint system, providing excellent corrosion protection for heavy-gauge steel. It offers excellent barrier and cathodic protection, and when combined with a compatible EP filler, results in a highly durable coating system. Additionally, it boasts impressive heat resistance, withstanding continuous temperatures of up to 180°C.

CS382NG: Light Grey

PercoTop® Epoxy HS High Built Coating

Is a high-build surface-tolerant 2K anti-corrosive paint based on epoxy resins. It has an excellent resistance against humidity, weather, and mechanical load. Perfect corrosion protection for manually derusted surfaces

CS591: Silver Grey

CS592: White



2K PU primer surfacers can be used in sanding or non sanding version. Combined with a wash primer, the selection of 2K PU primer surfacers will result in high level topcoat appearance with excellent corrosion resistance.

PercoTop® 2K HS Primer 040

Developed to address the most demanding requirements of the commercial vehicles, ACE segment and general industry. It is fast drying and can be used as primer or primer surfacer.

CS340: Light Grey

CS341: Green

CS342: White

CS343: Black

CS345: Base

CS347: Red

PercoTop® 2K VHS Power Primer 4000

Very low emission primer with excellent filling properties, excellent sandability. Can be used as wet-on-wet primer and sanding filler.

CS371: Pearl White

CS372 : Dark Grey

Percotop® Surfacer are designed to smooth minor surface imperfections on well prepared substrates. Depending on preparation quality, these surfacers can be sanded (sandable filler) or recoated without sanding in a wet-on-wet application (wow filler).

PercoTop® 2K PU Sandable Filler CS350

This filler is fast drying, has a good sand ability and optimal appearance. It can be applied as filler or high build filler depending on the amount of thinner added.

Colour: Light Grey.

PercoTop® 2K HS Sanding Filler CS364-6

It dries fast and can be sanded after a short curing time. The product can be applied as filler or high build filler depending on the amount of thinner added.

CS364 White - CS365 Black - CS366 Grey

PercoTop® 2K DTM Primer Surfacers Universal

A universal high solid primer surfacer designed for effective, fast and efficient use. This product can be applied directly on a variety of metal substrates. Can be used wet-on-wet, as well as a sanding filler, providing good topcoat leveling and excellent flow. This versatile primer offers good topcoat holdout in combination with excellent corrosion protection and a very good adhesion.

CS374: White

CS375 : Light Grey

CS376 : Dark Grey

PercoTop® 2K HS Sanding Filler CS352

It dries fast and can be sanded after a short curing time. The product can be applied as filler or high build filler depending on the amount of thinner added. Specially designed for large surface.

Colour: Light Grey

PercoTop® 2K WOW Filler CS357-9

A wet-on-wet Filler and especially suitable for commercial vehicles. Composition based on an acrylic resin. It is easy to apply and has a good overspray absorption.

CS357 Grey - CS358 White - CS359 Black.



PercoTop® Undercoats Guide

Substrate	2K Washprimer CS30X	1K Primer 010 CS31X	1K Primer 021 CS321	2K HS EP Primer CS381	2K Zinc Rich Primer CS382NG	2K HS EP Primer CS384	Supra Sand EP Primer CS388	High built Epoxy Primer CS591	2K HS PU Primer 040 CS34X	Power Primer 4000 CS371-2	2K DTM Primer Surfacer CS374	2K HS Primer 049 CS391-2	2K PU Sandable Filler CS350	2K HS Sanding Filler CS352	2K WOW Filler CS357-9	2K HS Sanding Filler CS364-6
Steel cast iron	X	X	X	X		X	X	X	X	X	X	X				
Steel sandblasted SA 2.5		X	X	X	X	X	X	X	X	X	X	X				
Inox/stainless steel sanded	X			X		X	X				X					
Galvanised steel	X	X		X		X	X	X	X		X	X				
Aluminium	X	X	X	X		X	X		X		X					
General plastic		X							X	X	X					
UP-GRP				X		X	X		X	X	X	X	X	X	X	X
Powder coat/ e-coat sanded		X	X	X		X	X	X	X	X	X		X	X	X	X
Sanded old paintwork		X	X	X		X	X	X	X	X	X		X	X	X	X
Mineral substrates, concrete				X		X	X		X							

Adhesion test recommended for each substrate

Properties

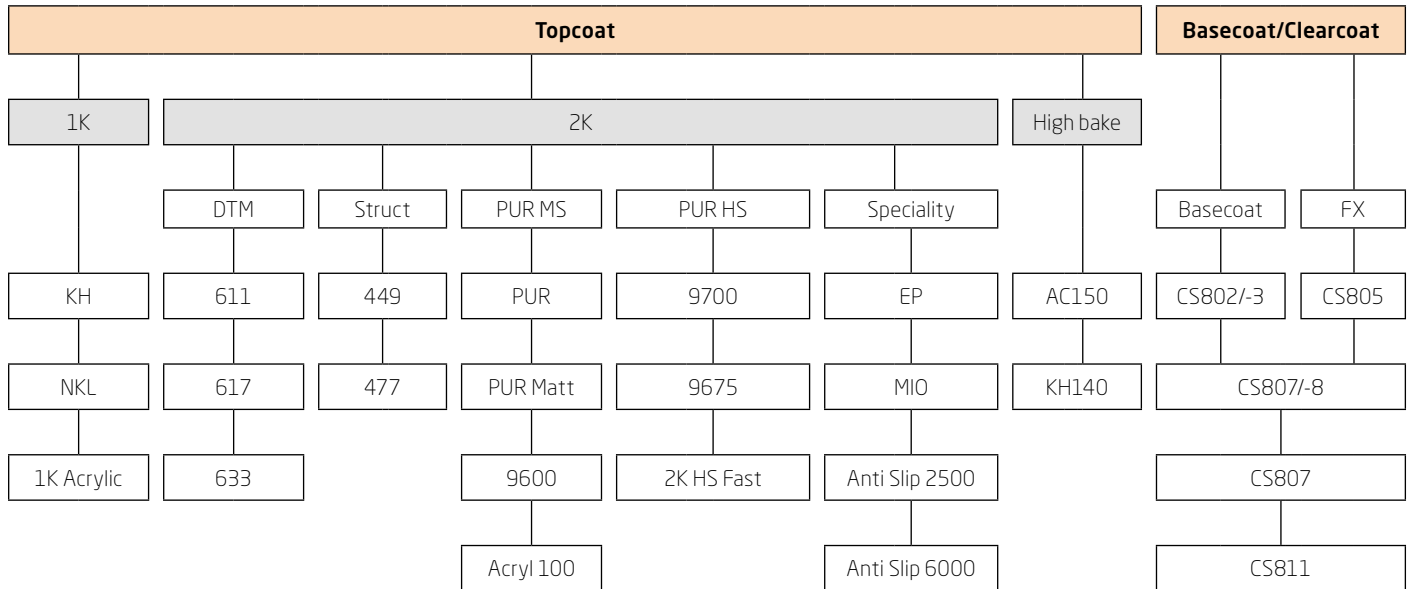
Sandable		*	*	**	*	**	***	*	*	***	***	*	***	***	**	***
Wet on Wet application	***	***	***	**	**	**	***	***	***	***	***	***			***	
Filling properties		**	***	***	***	***	***	***	**	**	***	**	***	***	***	***
Corrosion protection	**	*	*	**	***	***	***	***	**	*	**	**				
One activator primer/ topcoat									***	***	***	***	***	***	***	***
Drying time	**	***	*	*	**	**	***	*	**	**	***	**	**	**	**	**

* Possible
 ** Good
 *** Optimal
 Not Applicable

Undercoats

PercoTop® Finishes

PercoTop® topcoats exist in various technologies, from 1K to 2K, from medium solids to VOC compliant, offering a wide selection of solid colors, in various degrees of gloss and or different aspects (texture, structure, anti slip or smooth finish). Metallic or effect colors can be obtained with a basecoat clearcoat paint system



The **1K topcoat** offers a user-friendly application and quick drying finish, making it the premium choice for spray cans.

PercoTop® Acrylic

Is based on a thermoplastic acrylic resin. It is very fast drying and very suitable for touch up.

Gloss Level: Matt to Gloss

PercoTop® KH

Is based on alkyd resin. It is easy to apply and is suitable for indoor and outdoor use.

Gloss Level: Matt to High Gloss

PercoTop® NKL

Is based on nitrocellulose. Easy to apply and fast drying. Suitable for indoor use.

Gloss Level: Matt to Gloss

1K High bake topcoats have the benefit of being compatible with high bake processes, such as powder coat and ecoat, allowing a paintshop to have **1 single process (oven)**.

PercoTop® KH140

Is a composition based on alkyd melamine resin. Baking temperature is 140°C object temperature.

Gloss Level: Semi Matt to High Gloss

PercoTop® AC150

Based on polyacrylate resin. The special binder/pigment formulation allows for one-stage application on metal substrates without primer as DTM. It can be used straight onto steel, aluminum, and galvanized substrates.

Gloss Level: Semi Matt to High Gloss

The special binder/pigment formulation of our **2K DTM Topcoat** allows for one-stage application on metal substrates without primer. It can be used straight onto steel, aluminum, and galvanized substrates.

PercoTop® DTM 611 Interior

Is based on polyacrylate resin. Most suited for interior applications.

Gloss Level: Matt to High Gloss

PercoTop® DTM 617

Is based on crosslinking and a physically drying acrylate resin that is characterized by very fast drying. Extremely fast economical alternative for interior applications, less corrosion and sagging performance

Gloss Level: Gloss

PercoTop® DTM 633

Is based on a polyacrylate resin. HD version of the DTM 611. Most suited for exterior applications.

Gloss Level: Matt to High Gloss

Percotop 449, our **2K Topcoat Structured**, can be used to obtain a variety of finishes, from smooth to structured, depending the level of thinning, combined with the right spraygun settings (pressure, nozzle).

PercoTop® 449

Is a polyurethane based structure topcoat with a high mechanical resistance. It has an excellent resistance to solvents and other chemicals.

Different structures can be produced.

Gloss Level: Matt to High Gloss

PercoTop® DTM 477

Is a polyurethane based structure topcoat with faster drying performance. It can be used straight as DTM onto steel, aluminum, and galvanized substrates.

Gloss Level: Semi Matt



2K Medium Solid Topcoats have proven their value in the market of being easy to handle, fast drying with excellent topcoat appearance.

PercoTop® Acryl 100

Based on acrylic resins. It is equally suited for indoor and outdoor use and offers high UV-resistance and good light fastness.

The topcoat is easy to apply and has very good tension.

Gloss Level: Matt to High Gloss

PercoTop® PUR 2K MS Topcoat

based on acrylic and polyester resins. It has excellent mechanical and chemical resistance.

The topcoat is easy to apply.

Gloss Level: Matt to High Gloss

PercoTop® PUR MATT

Ready to use version of the PUR 2K MS Topcoat for very matt surfaces (<10 degrees in 60° angle).

Gloss Level: Dead Matt

PercoTop® 9600

High quality topcoat system based on acrylic resins. It offers high gloss surfaces, a risk-free stable application and is fast drying.

Excellent mechanical, chemical and weather resistance.

Gloss Level: Matt to High Gloss

PercoTop® High Solid topcoats are the new generation of finishes, within legislation of limited VOC's (< 420g/L). They are designed for high end finishes and robust applications.

PercoTop® HS

Topcoat system based on acrylic resin. It has an excellent mechanical and chemical resistance and combines low material consumption with good sagging resistance and final appearance.

Gloss Level : Matt to High Gloss

PercoTop® 9675

High quality topcoat system based on acrylic resin. Excellent resistance to chemical and mechanical aggression. Contains sagging control agent for stable application on large surfaces with complex geometries. Also well-suited to airless or airmix application and with or without electrostatic equipment.

Gloss Level : Matt to High Gloss

PercoTop® 9700

High quality 2K topcoat system based on acrylic resin. In addition to excellent resistance to chemical and mechanical aggression it offers excellent flow and smooth appearance.

Gloss Level : Matt to High Gloss

PercoTop® 2K HS Fast

NEW High quality topcoat system allowing higher productivity and energy saving thanks to its fast curing performance. Excellent flow and smooth appearance, resistance to chemical and mechanical aggression. Well-suited to airmix application.

 Specific applications

 Premium applications

2K Topcoat Specialty

PercoTop® MIO

Mica topcoat based on polyacrylate resin. It has a typical gloss and effect formation and is equally suited for indoor and outdoor use. The topcoat has an excellent mechanical, chemical and weather resistance.

Gloss Level : Semi Gloss

PercoTop® EP

Topcoat based on epoxy resin. For objects with extreme surface hardness and high mechanical and chemical resistance. Shows typical epoxy resin chalking and colour change with weather- and UV-exposure and is therefore mainly suited for indoor use.

Gloss Level: Semi Gloss to High Gloss

PercoTop® Anti Slip 2500

VOC compliant, high solid Topcoat system with excellent anti-slip properties. R11 according to DIN 51130:2014-02.

Gloss Level : Semi Gloss

PercoTop® Anti Slip 6000

VOC compliant, high solid Topcoat system with excellent anti-slip properties. R12 according to DIN 51130:2014-02



PercoTop® Topcoats Guide

Properties	PercoTop® 1K Acrylic	PercoTop® 1K KH	PercoTop® NKL	PercoTop® KH140	PercoTop® A150	PercoTop® 2K DTM 611/633	PercoTop® 2K DTM 617	PercoTop® 2K Structure 449	PercoTop® 2K DTM Structure 477	PercoTop® 2K PUR	PercoTop® 2K PUR Matt	PercoTop® 2K 9600	PercoTop® 2K HS	PercoTop® 2K 9675	PercoTop® 2K 9700	PercoTop® 2K HS Fast	PercoTop® 2K MIO	PercoTop® 2K EP	PercoTop® 2K Anti Slip
Drying time	***		***	***	***	**	***	***	***	**	***	***	***	**	**	***	***	**	***
Weathering	*	*	*	*	***	**	*	**	**	**	***	***	***	***	***	***	**		**
Appearance	*	**	*	**	***	*	**			***	***	***	**	**	***	***		**	
Sagging resistance	*	**	*	**	**	*	*	***	***	**	**	**	***	***	**	**	***	**	***
Direct to Metal					***	**	***		**										
Heat resistance <160°C	*	*	*	**	**	**	**	**	**	**	**	**	**	**	**	**	**	**	**
Chemical resistance				*	***	*	**	***	***	***	**	***	***	***	***	***	***	**	***
Resistance fuel/oil				*	***	**	**	***	***	***	**	***	***	***	***	***	***	***	***
Structured topcoat								***	***										***
Mechanical properties	*	*	*	**	**	**	**	***	***	***	***	***	***	***	***	***	*	*	***

* Possible
 ** Good
 *** Optimal
 Not Applicable

PercoTop® tints have been identified for colour and effect capabilities for the creation of a large variety of colours in various paint qualities.

CS010 White	CS046 Red Shade Violet	CS081 Green Pearl
CS012 Black	CS050 Violet	CS082 Yellow Pearl
CS024 Yellow Oxide	CS054 Indigo Blue	CS083 Violet Pearl
CS026 Green Shade Yellow	CS056 Green Shade Blue	CS084 White Pearl
CS027 Brilliant Yellow	CS057 Red Shade Blue	CS085 Copper Pearl
CS028 Red Shade Yellow	CS060 Blue Shade Green	CS090 Green LS
CS032 Orange	CS062 Yellow Shade Green	CS091 Black LS
CS036 Clean Orange	CS070 Silver	CS092 Oxide LS
CS037 Red Oxide	CS071 Coarse Silver	CS093 Blue LS
CS040 Deep Red	CS072 Extra Coarse Silver	CS094 Yellow Oxide LS
CS041 Bright Red	CS073 Bright Extra Coarse Silver	CS095 Transoxide Red LS
CS045 Blue Shade Red	CS080 Blue Pearl	

Topcoats Gloss and Matting

For all PercoTop® topcoats, formulations of every available gloss level can be retrieved directly from the color tools no need to determine or calculate yourself!

	Gloss 60°	PercoTop® 1K Acrylic	PercoTop® 1K KH	PercoTop® 1K NKL	PercoTop® 2K Acryl 100	PercoTop® 2K DTM 611/633	PercoTop® 2K DTM 617	PercoTop® 2K Structure 449	PercoTop® 2K DTM Structure 477	PercoTop® 2K PUR	PercoTop® 2K PUR Matt	PercoTop® 2K 9600	PercoTop® 2K HS	PercoTop® 2K 9675	PercoTop® 2K 9700	PercoTop® 2K HS Fast	PercoTop® 2K MIO	PercoTop® 2K EP
High Gloss	>80	X	X		X	X		X		X		X	X	X	X	X		X
Glossy	65-90	X	X	X	X	X	X	X	X	X			X					X
Semi-Gloss	50-75	X	X	X	X	X		X		X		X	X	X	X			X
Semi-Matt	35-60	X	X	X	X	X		X		X		X	X	X	X			
Matte	20-45	X	X	X	X	X		X		X		X	X	X	X		X	
Dead Matt	0-10										X							

The gloss level of structured topcoats depends strongly upon the structure chosen (cf. TDS) and a measurement on a structured surface does not correspond to visual impression of gloss.

Specific matting agents must be used depending on the topcoat you are using. Special additives are available to optimize the application of the paints

	PercoTop® 1K Acrylic	PercoTop® 1K KH	PercoTop® 1K NKL	PercoTop® KH140	PercoTop® AC150	PercoTop® 2K DTM 611/633	PercoTop® 2K DTM 617	PercoTop® 2K Structure 449	PercoTop® 2K Acryl 100	PercoTop® 2K PUR	PercoTop® 2K 9600	PercoTop® 2K HS	PercoTop® 2K 9675	PercoTop® 2K 9700	PercoTop® 2K EP
PercoTop® CS201 Matting agent 1K		X	X	X											X
PercoTop® CS203 Matting agent DTM					X	X	X								
PercoTop® CS204 Matting agent 2K	X								X	X					
PercoTop® CS209 Gloss agent 2K								X							
PercoTop® CS944 Matting agent structure								X							
PercoTop® CS979 HS Matt binder											X	X	X	X	

Tips from expert:
 Always stir your matting agent, matting binder and ready-mixed colours well before use. The matting agents tend to settle, which will lead to non-uniform gloss levels. When your result is not what you expected, there are a few things you can do, as many factors can influence the gloss result.

Factor	Effect on gloss
Slow solvents in thinner/activator	↘ ↘
More thinner	↘ ↘
More activator	↗
Higher film build	↘
Higher temperatures	↗
Air drying vs. forced drying	↘
Wet application	↘

PercoTop® Basecoat, paired with the right clearcoat, reproduces metallic and pearl colors effectively.

PercoTop® Basecoat

Is a 1K-basecoat, developed for multi-tone applications (e.g. bicycles). Composition based on modified polyester binder. It is very fast drying and can be recoated with all PercoTop® clearcoats and powder clear coats.

PercoTop® clearcoats, available in medium and high solids versions, are ideal for any first class clear over base system. These 2K polyurethane clearcoats, easily applied over PercoTop basecoats or topcoats, provide a top-class high-gloss (> 70 GU 20°) and smooth flow finish.

PercoTop® 2K MS Clearcoat CS803

Medium solids clearcoat based on acrylic resins. It gives particularly high gloss.

PercoTop® 2K HS Clearcoat CS805

Productive high solids clearcoat based on acrylic resins. It combines easy and fast application with a variety of application possibilities. It gives excellent flow and appearance.

PercoTop® 2K HS Clearcoat CS808

Productive high solids clearcoat based on acrylic resins. It combines easy and fast application with a variety of application possibilities. It gives excellent flow and appearance.

PercoTop® FX Premium

1K-basecoat for solid, metallic and pearl colours. The composition is based on acrylic copolymers and is designed for use on cars, trucks, buses, etc. It is very fast drying and can be recoated with all PercoTop® clearcoats and powder clear coats. Easy application and excellent mottling control. Excellent hiding and coverage save time and materials

PercoTop® 2K HS Clearcoat CS870



New versatile high solids 2K polyurethane clearcoat. Its composition is based on a new binder technology. It is easy to apply, has a high sagging-resistance and is quick curing. This clearcoat is particularly easy to work with and provides excellent wetting of the surface resulting in very smooth flow and good holdout.

PercoTop® 2K MS Helacryl Clearcoat CS811



Special medium solids polyurethane clearcoat based on acrylic resins. Distinctive features of CS811 are its high flexibility and excellent adhesion to a number of metallic substrates and plastic substrates. This way, various materials can be protected without changing their original appearance.

PercoTop® 2K HS Power Clearcoat CS807



Versatile high solids 2K polyurethane clear coat, perfect for large surfaces and complex shapes due to its sag resistance and overspray melt-in. Enhanced graffiti removal agent resistance with a higher activation ratio.



Specific applications



Premium applications

	PercoTop® Basecoat	PercoTop® FX	PercoTop® 2K MS Clearcoat CS803	PercoTop® 2K HS Clearcoat CS805	PercoTop® 2K HS Power Clearcoat CS807	PercoTop® 2K HS Clearcoat CS808	PercoTop® 2K MS Helacryl Clearcoat CS811	PercoTop® 2K HS Clearcoat CS870
Drying time	**	**	**	**	**	**	**	***
Weathering	**	***	**	***	***	***	***	***
Appearance	**	**	***	***	**	***	***	***
Sagging resistance	**	**	**	**	***	**	**	**



PercoTop® Auxiliaries and Functional Additives

The **PercoTop® activators** provide a versatile array of hardener components, allowing for optimal customization of PercoTop® paint systems to various needs and specific two-component system requirements. Your choice of activator depends primarily on two factors: temperature and object size. In situations with higher temperatures and larger objects, it is advisable to opt for slower activators.

Standard activators

Name	Name	Comments	Type	For 2K spray equipment
CS701	Activator standard	For PercoTop® Acryl 100, PUR, KH	MS	
CS702	Activator fast	Very fast for small parts	VHS	
CS704	Activator 3840	Fast for small parts	VHS	
CS705	Activator 4040	Chemical & corrosion resistance	VHS	
CS706	Activator 4060	Mechanical & corrosion resistance	VHS	
CS710	Activator VHS fast	Small parts	VHS	
CS711	Activator VHS standard	Standard	VHS	
CS712	Activator VHS slow	Large parts	VHS	
CS714	Activator 3845	Diluted CS704	MS	Yes
CS715	Activator 4042	Diluted CS705, interior use only	HS	Yes
CS716	Activator 4062	Diluted CS706, interior use only	HS	Yes
CS718	Activator HS slow	Large parts	HS	Yes
CS719	Activator HS standard	Standard	HS	Yes
CS720	Activator HS fast	Small parts	HS	Yes
CS721	Activator MS fast	Small parts	MS	Yes
CS722	Activator MS slow	Large parts	MS	Yes
CS726	Activator 4065	Diluted CS706, interior use only	MS	Yes

High UV resistance performance activators

CS703	Activator LR fast	Very fast for small parts	VHS	
CS713	Activator VHS UV resistance	Standard	VHS	

Our activators are commonly proposed 1L & 5L packaging.

Specific activators exist as well for specific purposes, please contact our expert.

The **PercoTop® thinner** range offers a versatile selection of thinners and thus enables PercoTop® paint systems to be optimally tailored to different purposes.

Name	Name	Comments
CS600	Thinner standard	Standard
CS601	Thinner 1K	1K
CS602	Thinner 2K	2K
CS603	Thinner fast	Very fast, has attributes of an accelerator
CS604	Thinner industry NC	Nitro thinner
CS610	Thinner fast	Fast for small parts
CS620	Thinner standard	Universal with better flow and overspray melt
CS630	Thinner slow	Large parts
CS640	Thinner extra slow	Large parts - high temperature
CS650	Thinner SA	Application using Airmix/Airless
CS680	Thinner epoxy	PercoTop® EP and Epoxy Zinc Rich Primer
CS681	Thinner epoxy primer	Epoxy primer

Our thinners are commonly proposed in 5L packaging.

Special additives are available to achieve different gloss levels and structures.

PercoTop® Texture Additive

CS220-223: Beads of varied sizes from very fine (30µ) to very coarse (200µ) provide various textures and anti-slip properties to all PercoTop® Topcoats

PercoTop® CS210 Elastic Additive:

CS210 is designed to elastify the paint to be applied, resulting in a coating with more or extreme flexible properties.

PercoTop® CS211 Brush 'n' Roll

Additive: From 1% to 3% to obtain an optimal results when brushing or rolling PercoTop® Topcoats

	PercoTop® 1K Acrylic	PercoTop® 1K KH	PercoTop® NKL	PercoTop® KH140	PercoTop® A150	PercoTop® 2K DTM 617	PercoTop® 2K DTM 611/633	PercoTop® 2K Structure 449	PercoTop® 2K DTM Structure 477	PercoTop® 2K PUR	PercoTop® 2K PUR Matt	PercoTop® 2K 9600	PercoTop® 2K HS	PercoTop® 2K 9675	PercoTop® 2K 9700	PercoTop® 2K HS Fast	PercoTop® 2K MIO	PercoTop® 2K EP	
CS210 Elastic Additive	10-50%									10-50%									10-50%
CS211 Brush 'n' Roll Additive	1-3%									1-3%									1-3%
CS220 Texture Additive	5- 10%											5- 10%							
CS221 Texture Additive								5- 10%											5- 10%
CS222 Texture Additive								5- 10%											5- 10%
CS223 Texture Additive			5- 10%									5- 10%							5- 10%

PercoTop® Performance

Corrosion protection

An everyday challenge faced by our coating market is finding a good solution for the corrosion of metal substrates. Corrosion is the electrochemical interaction between a metal and its environment, leading to alteration or degradation of aesthetic quality, functionality, and integrity. To protect metal substrates against corrosion, an adequate system must be selected and applied effectively, bearing in mind the environments the system will face during its lifetime.

Efficient corrosion protection is intrinsically linked to four main factors:

- the specific environment and type of corrosion your project will encounter
- the metallic substrate in scope
- the surface pre-treatment used
- the coating product selected

Primers	DFT (µm)	Coating system		Topcoat	DFT (µm)
		Mid-coat	DFT (µm)		
1K primer 010 CS31x	30			PercoTop® KH	70
				PercoTop® DTM 611 Silan	100
2K DTM Primer Surfacer CS374	120				
2K HS Primer 040 CS34x	80			Any 2K topcoat	40
High performance Epoxy primer CS381	60			Any 2K topcoat	40
High performance Epoxy primer CS381	120				
High performance Epoxy primer CS381	80			Any 2K topcoat	40
High performance Epoxy primer CS381	100			Any 2K topcoat	80
High performance Epoxy primer CS381	120			Any 2K topcoat	60
High performance Epoxy primer CS381	100	2K DTM primer surfacer CS374	80		
2K Zinkrich primer 053 CS382NG	60				
2K Zinkrich primer 053 CS382NG	60			Any 2K topcoat	100
2K Zinkrich primer 053 CS382NG	60	2K DTM primer surfacer CS374	100		
2K Zinkrich primer 053 CS382NG	80	High performance Epoxy primer CS384	80		
2K Zinkrich primer 053 CS382NG	80			Any 2K topcoat	120
2K Zinkrich primer 053 CS382NG	80	Epoxy HS high build coating CS591	120		
2K Zinkrich primer 053 CS382NG	80	2K DTM Primer Surfacer CS374	100	Any 2K topcoat	80
2K Zinkrich primer 053 CS382NG	80	Epoxy HS high build coating CS591	160	Any 2K topcoat	80
Epoxy HS high build coating CS591	120			Any 2K topcoat	60
Epoxy HS high build coating CS591	180			Any 2K topcoat	60
Epoxy HS high build coating CS591	180	2K DTM primer surfacer CS374	80	Any 2K topcoat	60

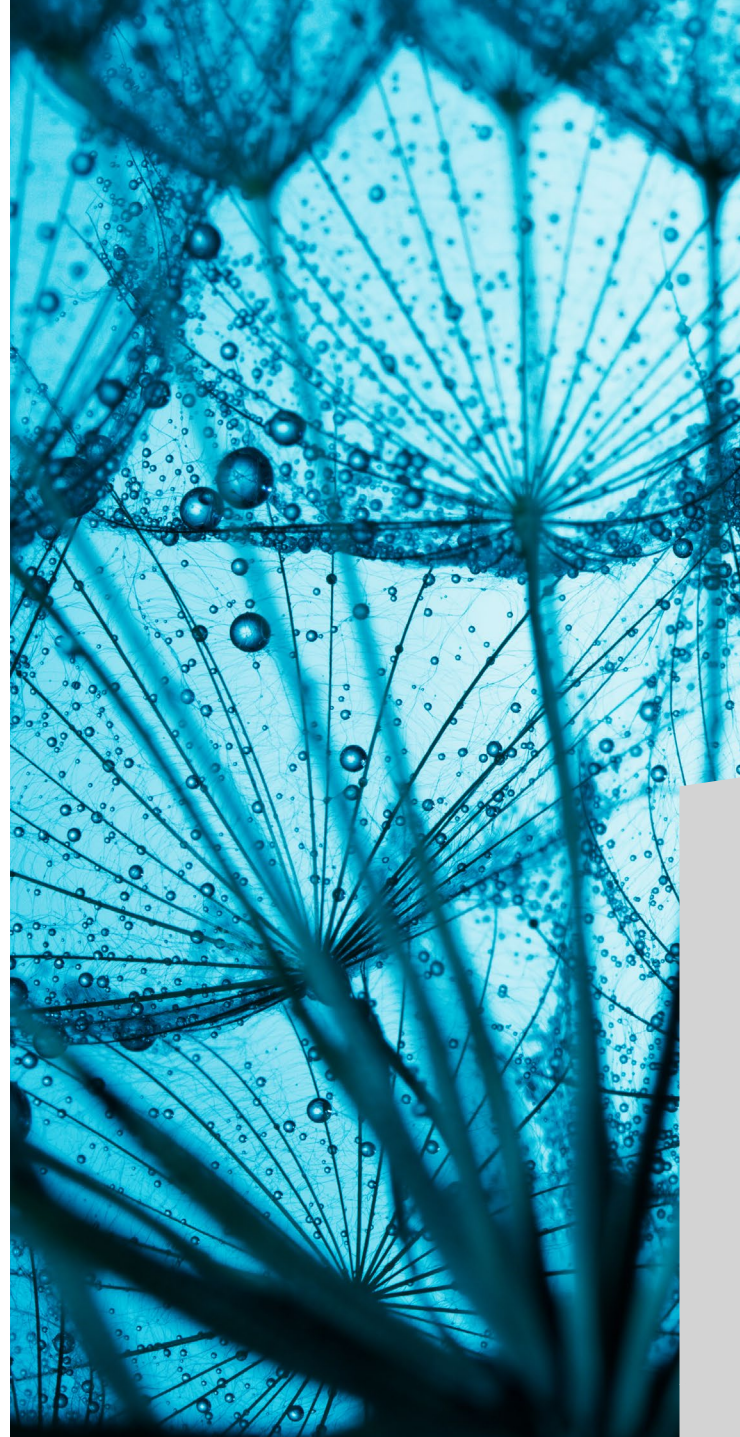
*PercoTop® CS381 with CS784 activator

Disclaimer: The above information is based on our experience gained with Axalta Coating Systems, and does not incur any responsibility for Axalta. Please consult us in order to gain advice appropriate to each specific requirement on the basis of which it is possible to select a system and/or establish a maintenance program. Regular maintenance of treated components will maximize durability.



The ISO 12944 standard defines the parameters of steel structure corrosion protection. The standard gives applicators, engineers, specifiers, and architects the tools they need to define environmental classification, protective paint systems, laboratory test methods, and systems for structures. More information on this standard can be found on our www.axalta.com/anticorrosion page.

Corrosion category					Full coating	
C1	C2	C3	C4	C5	Layer	Total DFT (µm)
h	m				2	100
h	m				1	100
vh	h				1	120
vh	h	m	l		2	120
h	m	l			2	100
vh	h	m	l		1	120
vh	h	m	l		2	120
vh	vh	m	l		2	180
vh	vh	m	l		2	180
vh	vh	h	m	l	2	180
vh	h	m	l		1	60
vh	vh	h	m	l	2	160
vh	vh	h	m	l	2	160
vh	vh	h	m	l	2	160
vh	vh	vh	h	m	2	200
vh	vh	vh	vh	h	2	200
vh	vh	vh	vh	h	3	260
vh	vh	vh	vh	vh	3	320
vh	vh	h	m	l	2	180
vh	vh	vh	h	m	2	240
vh	vh	vh	vh	h	3	300



- C1** Heated buildings with clean atmospheres e.g. offices, shops, schools, hotels
- C2** Unheated buildings e.g. storage facilities, sport halls
- C3** Production hall with high humidity and air pollution e.g. laundries, dairies, food processing plants
- C4** Chemical plants, swimming pools, coastal ship and boatyards. Industrial and inshore areas with medium salinity
- C5** Areas with almost permanent condensation and high pollution. Coastal areas with high salinity

requirement. And please note that a durability range is not a "guarantee period": rather, it is an item of technical

UV stability

Colour and Gloss stability are key elements of a paint, the duration of it in time and depending on weathering exposure is a determinant factor in the choice of your paint system. UV from sunlight can strongly impact these two factors, reason we propose you the best topcoat system for exterior application exposed to sun light.

Following decades of expertise and utilization the following topcoat systems are recommended based on QUV- B -Accelerated weathering testing according to ISO 11507/ASTM G 154

Layer	DFT (µm)	1000h	1500h	2000h
PercoTop® PUR standard colours*	40	***	***	***
PercoTop® PUR yellow/red/orange*	40	***	***	**
PercoTop® HS 9675 all colours*	40	***	***	***
PercoTop® Basecoat & PercoTop® 2K HS Power Clearcoat*	20 + 50	***	***	**

*Using activators CS703/CS713

Chemical resistance

For chemical resistance performance, most PercoTop® topcoats are resistant to chemicals and generic fuels. Please contact our expert for precise information on solvents and cleaning agents not specified in our technical documentation.



Applications



Architectural		
Window Frame	Substrate	PVC
	Primer	PercoTop® Special Cleaner CS410
	Topcoat	PercoTop® PUR
	Substrate	Aluminium
	Primer	PercoTop® CS309-CS340
	Topcoat	PercoTop® PUR



General Metal Finishing (Machine builders)		
Trailer/Cistern	Substrate	Steel/Aluminium
	Primer	PercoTop® 2K HS Epoxy Primer CS381
	Topcoat	PercoTop® 9675
Technical buildings (doors)	Substrate	Aluminium
	Primer	PercoTop® 2K HS High Performance Epoxy Primer CS384
	Topcoat	PercoTop® 9675
Machine Builders	Substrate	Steel
	Primer	PercoTop® 2K HS Primer 040 CS34X
	Topcoat	PercoTop® 449
	Substrate	Steel
	Primer	-
	Topcoat	PercoTop® DTM 477



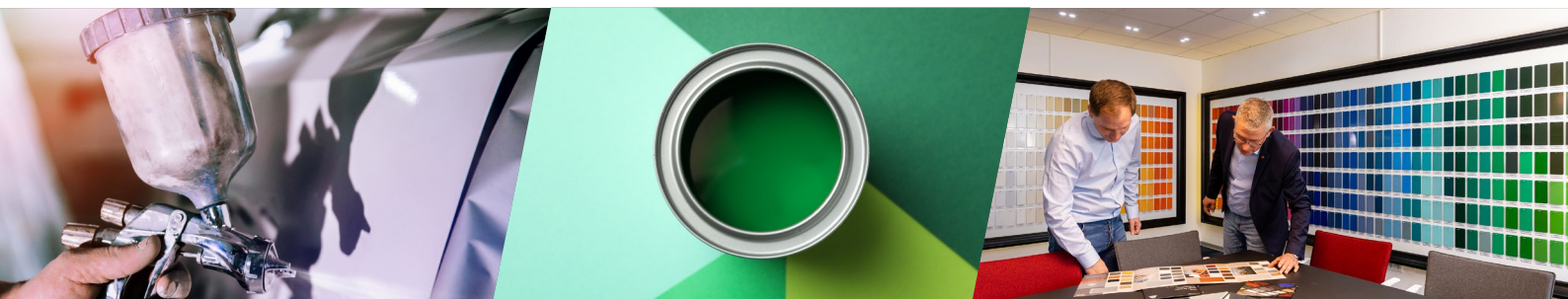
Agricultural, construction and earth-moving equipment (ACE)		
Excavator (engine covers)	Substrate	Steel
	Primer	PercoTop® 2K HS Primer 040 CS34X
	Topcoat	PercoTop® 9675
Electrical engines	Substrate	Steel
	Primer	PercoTop® 2K HS Epoxy Primer CS381
	Topcoat	PercoTop® 449
Truck chassis	Substrate	Steel/Aluminium
	Primer	PercoTop® 2K HS High Performance Epoxy Primer CS384
	Topcoat	PercoTop® 9675
Cabins for cable cars	Substrate	Aluminium
	Primer	PercoTop® Chrome-free 2K Wash Primer PercoTop® WOW filler CS357-9
	Topcoat	PercoTop® 9675 / 9700



Customer Competence Center Erzhausen

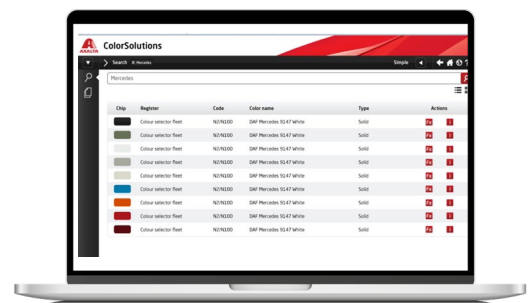
Our Customer Competence center is located in Erzhausen, Germany. This is our small new-scale production facility close to Frankfurt. Here we can provide multiple services:

- Production from scratch – customized results for line trials and new customer business. With our own adjoining laboratory, we will provide you with your customized formulas – from simple modifications to completely new products. Backed by cutting-edge technology and skilled personnel, we ensure expedited, superior outcomes. Leveraging Axalta's extensive resources, capacities, and expertise further streamlines the process, saving you valuable time.
- Colour Experience Room: The idea for the Colour Experience Rooms arose when Axalta noticed that within communications to architects and designers there was not much information on powder coatings or the specific colours and qualities available. Therefore, Axalta thought about how to serve its products and quality closer to these target audiences who are the communicators to the users of our products, job coaters, facade – and cladding companies.
- Join us for a 2-day PercoTop® Training session where Axalta will share its expertise. You'll gain essential knowledge and skills in using PercoTop, fine-tune your spray equipment, and confidently apply PercoTop coatings. This course includes a blend of theory and hands-on workshops, all in a relaxed and welcoming environment. Find out more and register for the PercoTop® trainings using the QR-code.



Colour Management

With **Color Solutions** Axalta presents a unique cloud-based tool, updated on a weekly basis, where you can conveniently discover a comprehensive range of colours, including solids, metallics, and pearls. This versatile resource covers everything from the commercial vehicle and industrial coatings sector to an extensive selection of architectural colour options.



With the **Axalta Color Compact** tools you will be able to realize electronic color identification and connect it directly to the ColorSolutions tool.

Mixing Equipment



Axalta can provide you with the full package of equipment to build your Mixing room. The Alphamix is a typical manual mixing rack available in different configurations in terms of racks number and size of cans.

Different designs are possible with the Alphamix 160 (168x228cm) and 220 (220x228cm) 1L and 3.5L Can can be implemented in the Alphamix rack system

Do not hesitate to ask support of our expert to guide you in the best way to organized your mixing Room.

The Automated Mixing machine proposed by Axalta in collaboration with Fast & Fluid manufacturer will allow you to improve productivity for preparation of mixing system using Axalta PercoTop® range. Thanks to the advantage of having binder container in the machine you can reduce manual operations and by the user friendly PercoTop® Axalta Industrial Color Software you will have simplicity of use to directly produce the library of color shade in Axalta. The cloud-based benefits of the software will avoid manual update operation.



Key advantages

- Axalta Industrial Color Software Cloud based
- Compact machine (2-2.5m³)
- Modulable from 16-36 stainless steel container
- Brush cleaning only
- Binder in
- High Flow rate
- Exact dosage

Voice of our customer

"PercoTop® high quality consistency and machine dosing accuracy permit full trusting no color check/adjustment necessary compared to other systems. Binder in machine allows better productivity for small batch. Axalta Software is extremely easy & simple to use."

J. Holmqvist – CEO – Syntema i Arbrå AB (SE)

Accessories

Axalta as a one shop floor!

We have the complete offering of accessories you may need in all your activities. You can find the full list on axalta.com/percotop.



- Spray gun systems
- Masking systems
- Polish systems
- Protection
- Scales
- Label printers
- Fill one
- Colour measurement
- Mixing cups
- Grinding systems
- Lids
- Roll wall holders



WWW.AXALTA.COM/INDUSTRIAL-EMEA

Your PercoTop® partner

For questions please contact
your local sales office.

Europe, Middle-East, Africa

Axalta Coating Systems GmbH
Uferstraße 90
4057 Basel
Switzerland

The information provided herein corresponds to our knowledge on the subject at the date of its publication. This information may be subject to revision as new knowledge and experience becomes available. The data provided fall within the normal range of product properties and relate only to the specific material designated; these data may not be valid for such material used in combination with any other materials or additives or in any process, unless expressly indicated otherwise. The data provided should not be used to establish specification limits or used alone as the basis of design; they are not intended to substitute for any testing you may need to conduct to determine for yourself the suitability of a specific material for your particular purposes. Since Axalta cannot anticipate all variations in actual end-use conditions Axalta makes no warranties and assumes no liability in connection with any use of this information. Nothing in this publication is to be considered as a license to operate under or a recommendation to infringe any patent rights.

The Axalta logo, Axalta™, Axalta Coating Systems™ and all products denoted with ™ or ® are trademarks or registered trademarks of Axalta Coating Systems, LLC and its affiliates. Axalta trademarks may not be used in connection with any product or service that is not an Axalta product or service. Axalta Coating Systems GmbH · Uferstraße 90 · 4057 Basel · Switzerland | 02/2024

